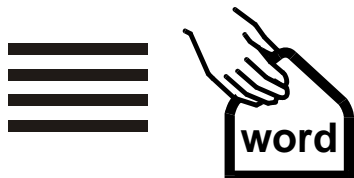




Somerset
Council



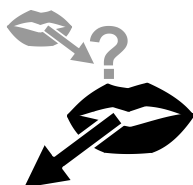
Easy Words



About Direct Payments



What is a direct payment?



A Direct payment is money for you

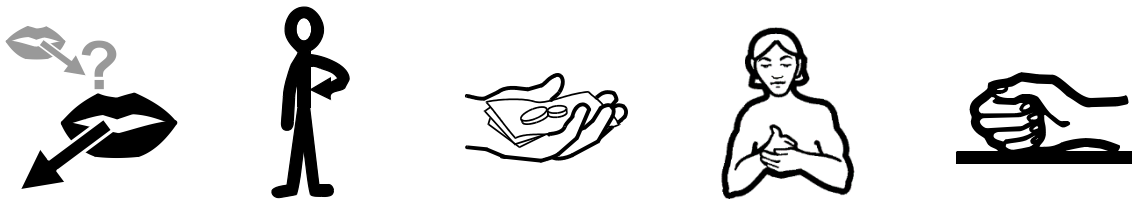
From



Somerset
Council



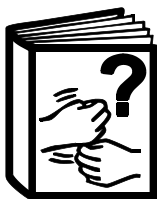
What is the money for?



You can pay a carer to help you.



A Direct Payment is a different way



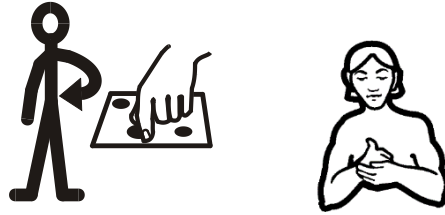
to get a carer.



Why is it different?



A Direct Payment means



YOU choose your carer.



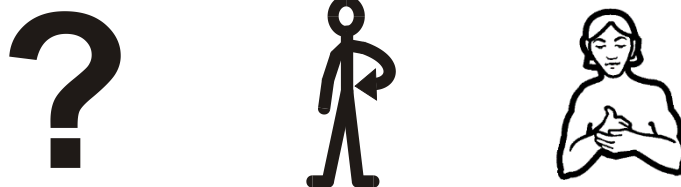
Your Social Worker will tell you the



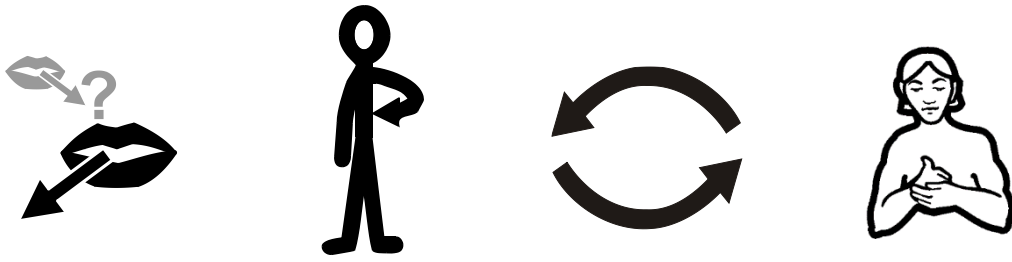
help that you need, but



YOU choose your carer.



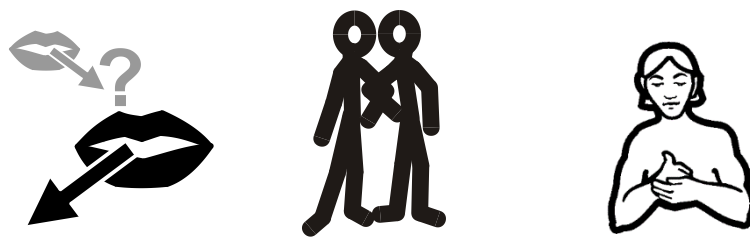
What if I already have a carer?



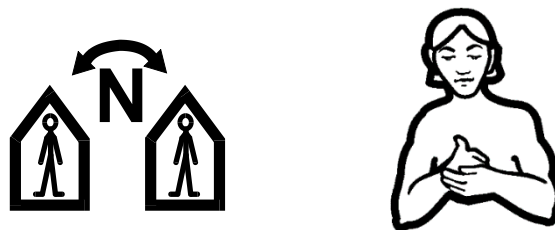
You can change your carer.



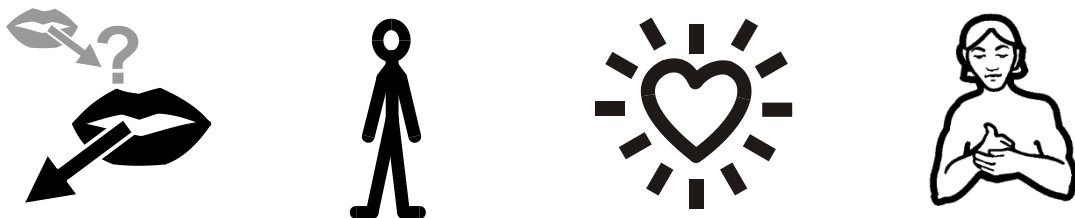
Who can be my carer?



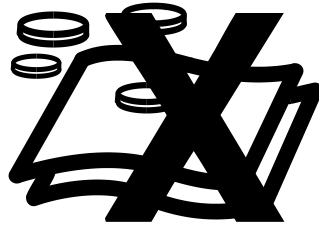
A friend can be your carer.



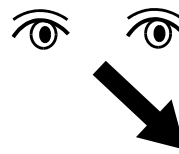
A neighbour can be your carer.



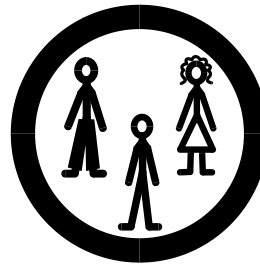
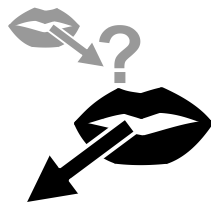
Someone you like can be your carer.



Your family CANNOT be your carer.



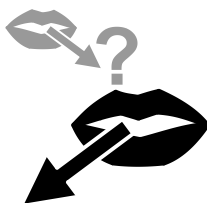
Who can help me find a carer?



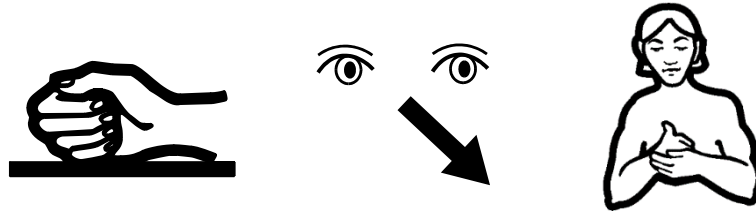
Your family



your friends



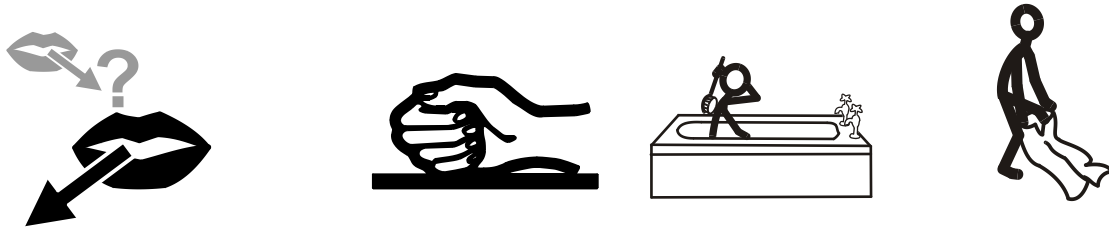
someone from Enham



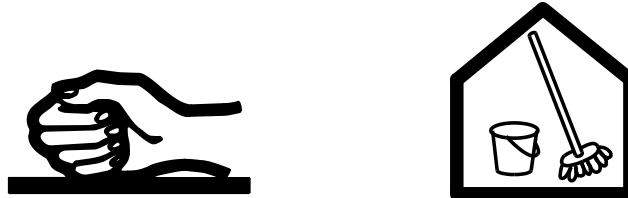
can help you find a carer.



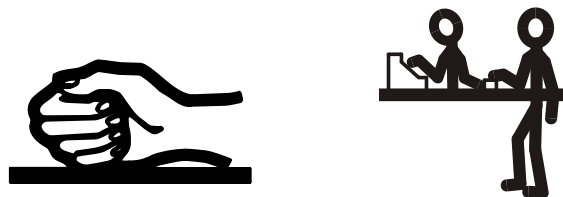
What can my carer do?



They can help you wash and dress.



They can help you with housework.



They can help you with shopping.