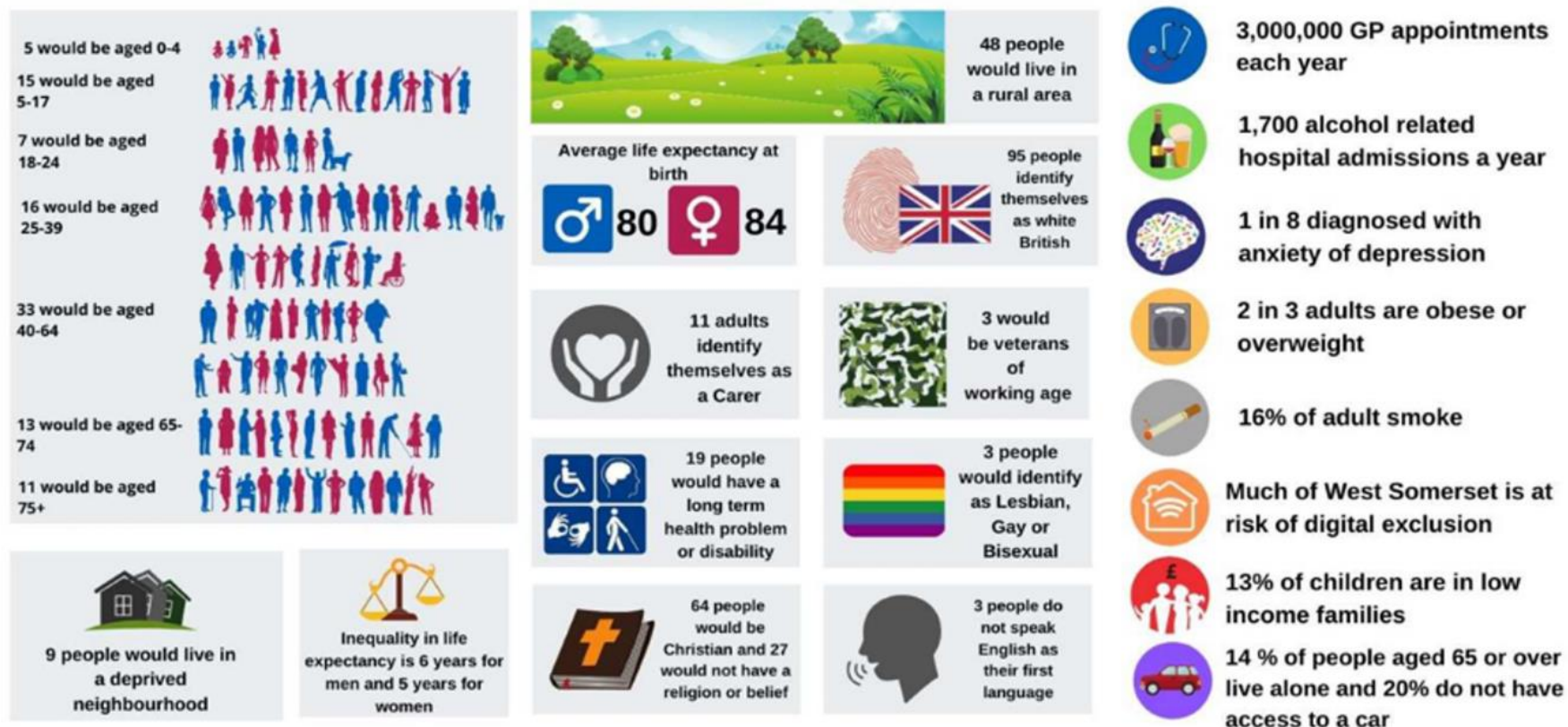


Our demographic profile

If Somerset was a village of 100 people

What we know: Our population is relatively older than the national average, and over the next 25 years while the overall population will rise by 15% we expect those over the age of 75 to double, resulting in a significant rise in demand for health and care services.



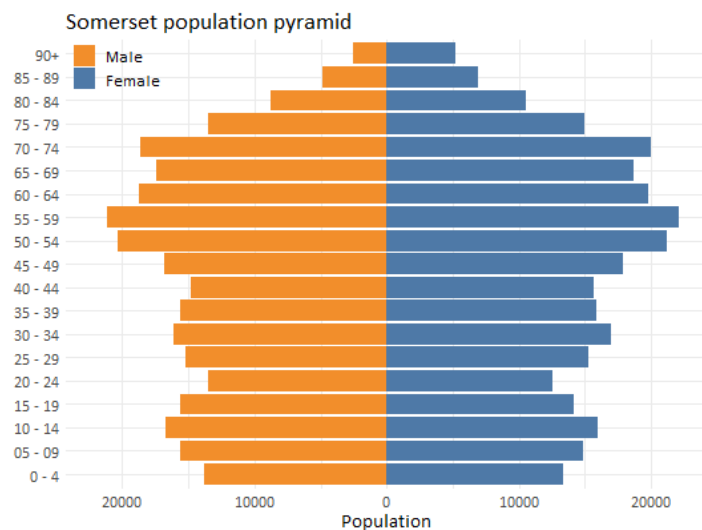
Adult Social Care Self-Assessment Appendix 3: Our Demographic Profile

Somerset is well known for its natural beauty. It has rolling hills, the flat plains of the Somerset Levels, and a 25 mile stretch of the South West Coastal path. Particular attractions include Cheddar Gorge in the Mendip area, Exmoor National Park and four hill ranges, the Mendips, Blackdowns, Brendons and Quantocks. Glastonbury Festival is an international musical highlight and sees an influx of approximately 210,000 staff and visitors during June. Bridgwater is also home of the largest illuminated carnival in Europe, a spectacle that brings thousands of people into the county every year in November.

2021 Census data reveals the population of Somerset to be 571,600, an increase of around 41,600 people since 2011. This is a rise of 7.8% since 2011.

Our population profile is older than the England average, with 25% being over 65. Over the next 25 years we expect a significant rise in our older population, with a doubling in the proportion of those over 75, compared with an overall population rise of 15%. As our population changes, the support people need from our local services is also changing.

The population pyramid below shows that for both male and female sexes the largest age groups are among the older age bands. The age bands with the highest population are 50-54 and 55-59.



Adult Social Care Self-Assessment
Appendix 3: Our Demographic Profile

People are living longer, and more people are living with long-term conditions. As a result, the Local Authority and our partners need to work differently, providing more care and preventative support in people's homes and local communities, and working more effectively in partnership.

Somerset has less deprivation than the England average. Approximately 10% of the Somerset population fall into the England Core 20 most deprived group, which are mainly centred in urban areas. There is a lot of rural deprivation which is not as extreme but exacerbated by poor transport and access to services and digital exclusion, especially in West Somerset and coastal areas.

For further information about Somerset's Profile visit:

- [Joint Strategic Needs Assessment \(healthysomerset.co.uk\)](http://healthysomerset.co.uk)
- [Somerset Profile - Somerset Intelligence - The home of information and insight on and for Somerset - Run by a partnership of public sector organisations](#)
- [Home Page - Somerset Intelligence - The home of information and insight on and for Somerset - Run by a partnership of public sector organisations](#)