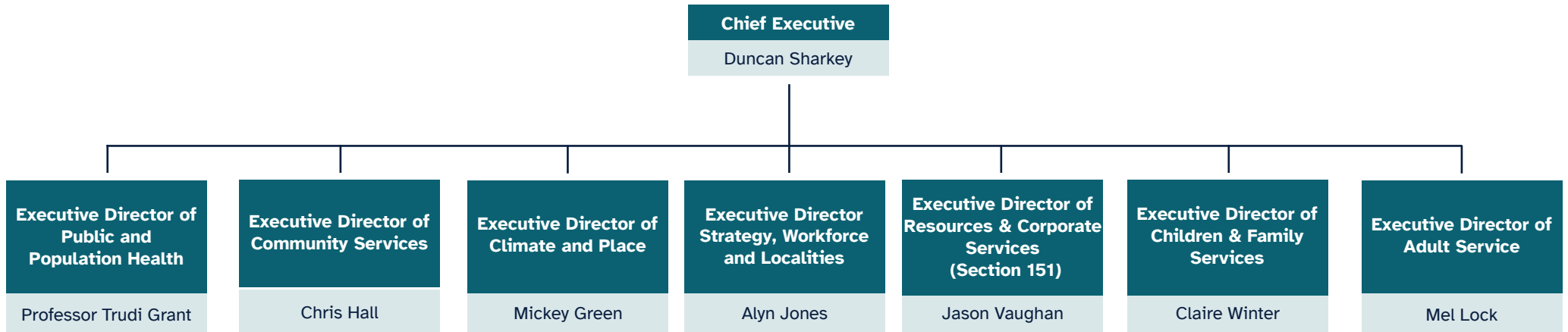
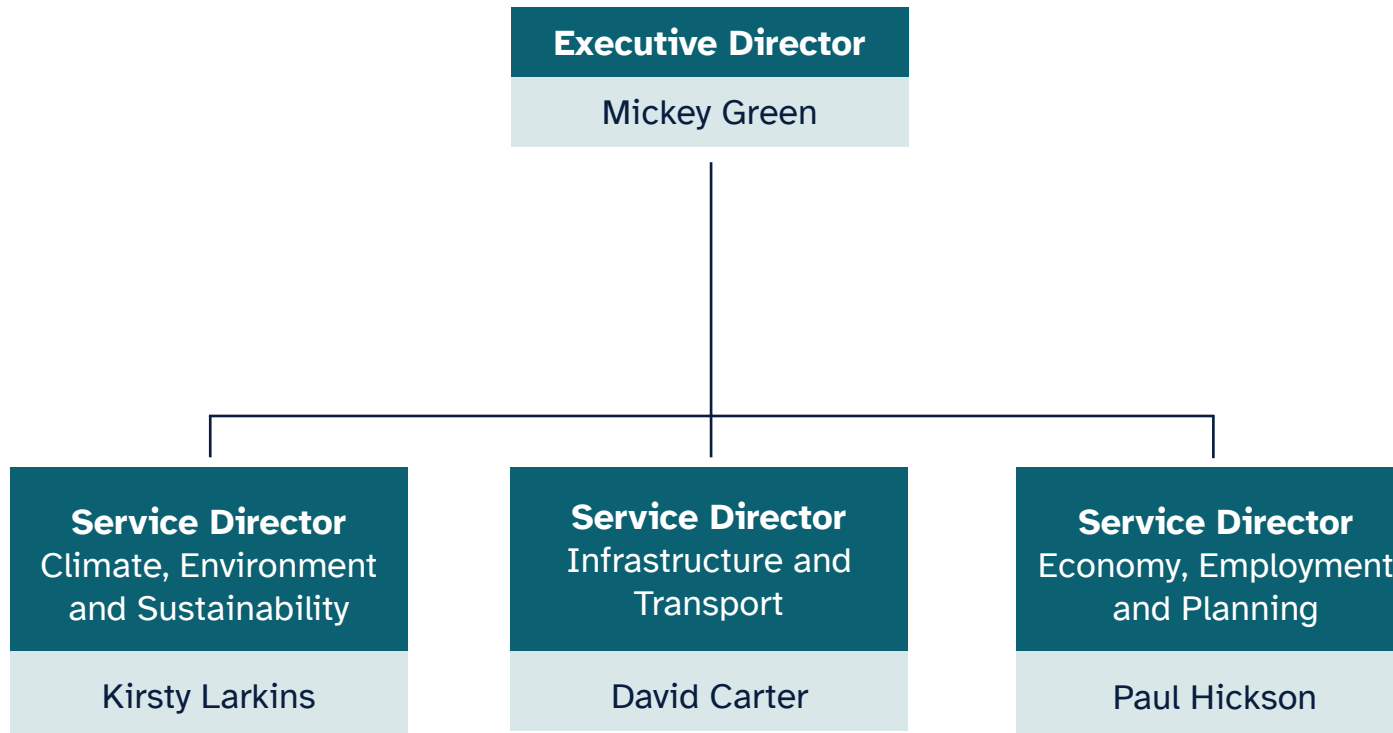


# Tier 1 & 2



# Climate and Place



# Executive Director Climate and Place

## Climate, Environment and Sustainability

- Strategy and Partnership development
- Carbon Neutrality
- Climate Resilience and Adaptation
- Renewable Energy
- Country Parks, Local Nature Recovery Strategy, Local Nature Reserves, AONB Partnerships (Countryside Services)
- Biodiversity (and net gain) and Ecology
- Sustainability
- Waste Service
- Emergency Planning and Business Continuity
- Water Management
- Lead Local Flood Authority & Land Drainage
- Flooding Response
- Coastal Protection Authority
- Somerset Rivers Authority

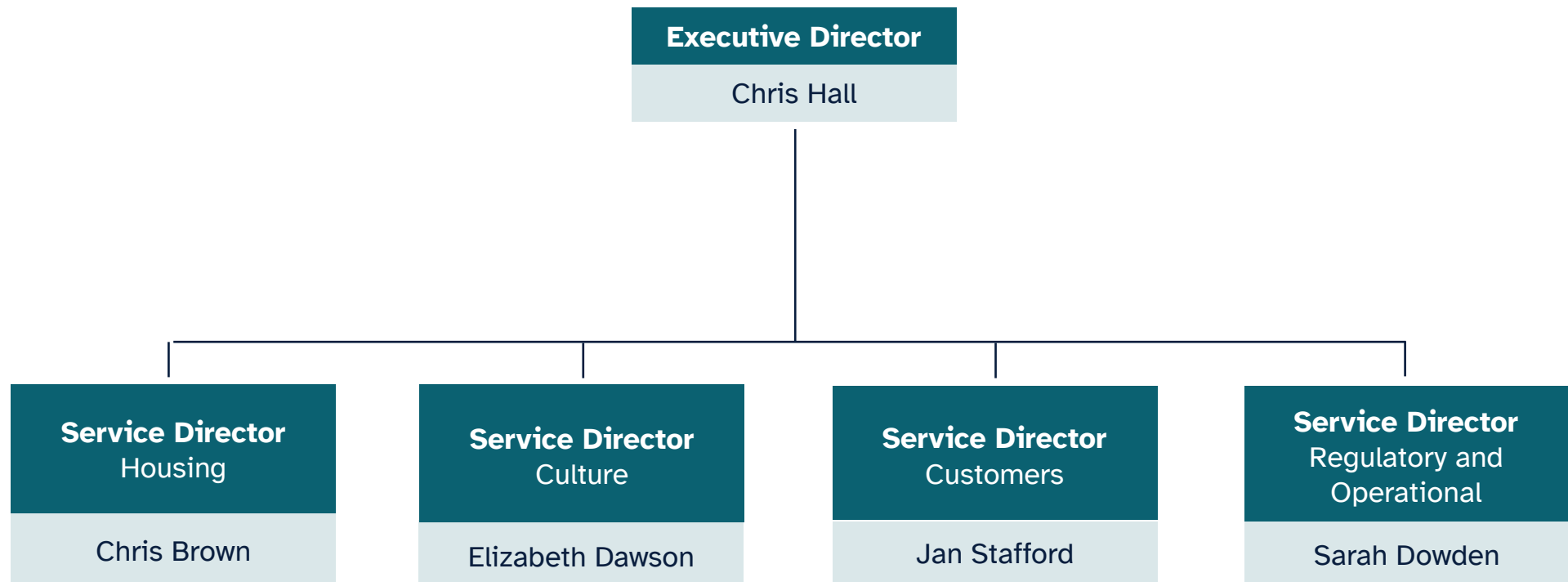
## Infrastructure & Transport

- Highways Authority
- Public Rights of Way
- Parking
- Active Travel
- Traffic Management
- Transport
- Public Transport
- Fleet Management
- Contracted Transport
- Strategic Transport Planning
- Highways Major Projects
- Road Safety
- Delivery Programme Management
- Infrastructure Commissioning

## Economy, Employment & Planning

- Economic Development
- Planning (conservation and heritage at risk, enforcement, DM, local plan, waste and minerals, s106 allocations/CIL, Phosphates)
- Affordable Housing and Enabling
- City/Town Centre Management
- Building Control
- Trading Standards (Devon partnership)
- Skills
- Education Business Partnership
- Economic infrastructure, services and Innovation Centres
- Regeneration (non housing)
- Major Projects
- Nuclear Power

# Community Services



# Executive Director of Community Services

## Housing

- Strategy and HRA Business Plan
- Arms Length Management Organisation
- Homelessness
- Rough Sleepers Pathway
- Housing Options & Allocations
- Homefinder Somerset
- Housing and Leaseholder Management
- Housing Maintenance Responsive and Planned (Capital Programme), Compliance, Void Management
- Housing Development & Regeneration
- Tenant Services - Worklessness & Tenancy Management (New Tenancies, Income, Debt and Benefit Support, Rent Setting, Service Charges Tenancy Compliance)
- Somerset Independence Plus and Financial Assistance DFG, Loans, Advice
- Sheltered and Extra Care
- Housing Property Service
- Registered Providers and Partnerships
- Gypsy, Traveller and Van Dweller Services
- People Displacement Schemes and Services

## Customer Services

- Customer Service Strategy and Standards
- Corporate Customer Services
- Contact Centre
- Compliments & Complaints, Ombudsman Cases
- Local Service Centres
- Customer Engagement and Access

## Cultural Services

- Libraries and Local Offer
- Museums
- Theatres
- Leisure Centres, Facilities and Services (Contract and Direct)
- Sports Development Partnership
- Heritage Assets
- Arts Centres, Facilities, Services and Development
- Culture Facilities, Services and Development
- Tourism Facilities, Services and Development Including Cafes
- Community Facilities

## Regulatory and Operational Services

- Environmental Health and Licensing
- Registrars
- Coroners
- Environmental Protection and Enviro Crime
- Port Authority
- Port Management
- CCTV and Anti Social Behaviour
- Safety Advisory Group
- Private Sector Housing
- Street Cleansing
- Grounds Maintenance
- Beach Management
- Unauthorised Encampments
- Parks and Play Areas
- Public Toilets
- Dog Wardens
- Operational Service to Partners
- Bereavement Services
- Fairs and Markets
- Scientific Services

# Resources and Corporate Services



# Executive Director Resources and Corporate Services (s151)

## Finance and Procurement

- Finance Services (inc. Business Partners)
- Revenues and Benefits
- Pension Fund
- Capital Management
- Treasury & Corporate Debt Management
- Housing Revenue Account Financial
- Strategy
- Internal Audit
- Procurement
- External Audit
- Financial Systems
- Risk & Insurance Management
- Direct Payments
- Financial Assessment and Deputyship

## Strategic Asset Management

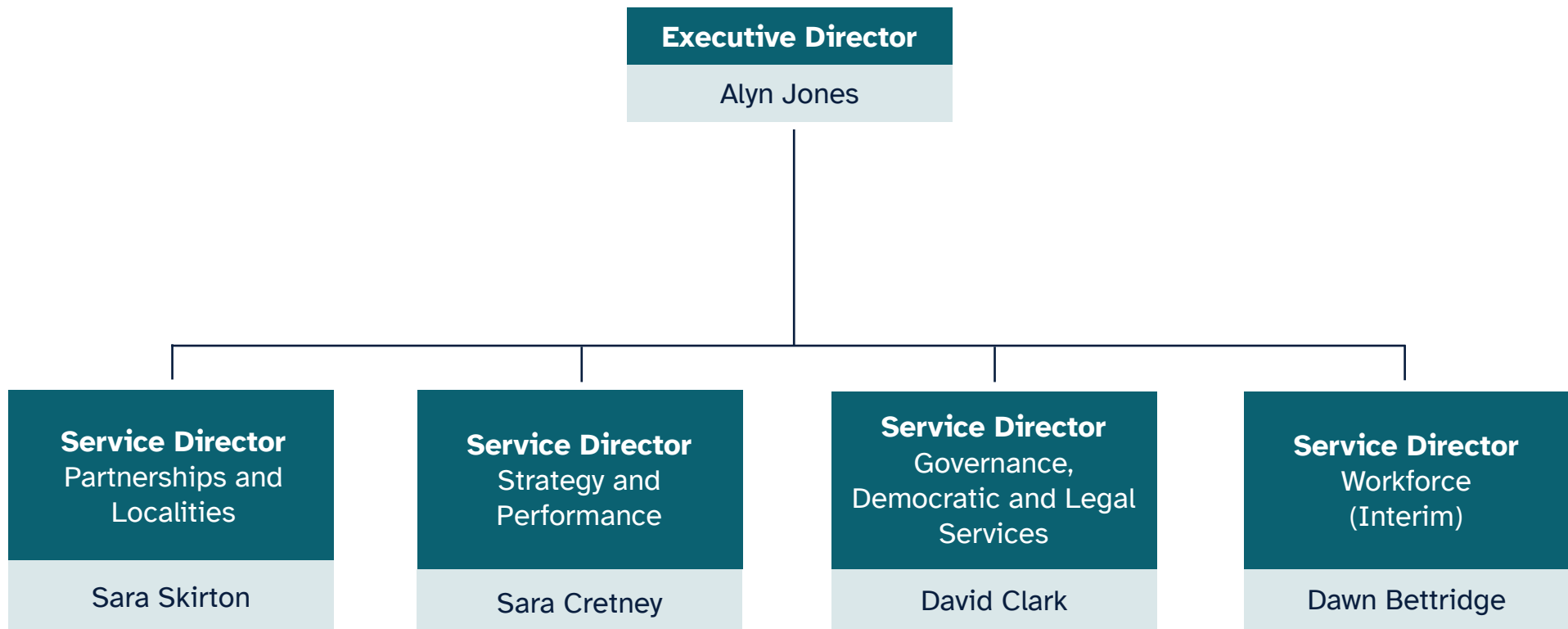
- Corporate Landlord function (Land and Property Asset Management)
- Asset Management Strategy
- Estates and Valuations
- Rural Estate Management
- Site Acquisition, Disposal and Development
- Property Records & Database
- Commercial Investment Property
- Facilities Management, Premises Contracts, Property Maintenance & Helpdesk
- Premises Compliance & Risk Management, Site Security and Management
- Closed Churchyards
- Schools & General Fund Condition Programme
- Estate Decarbonisation Strategy and Delivery
- Construction Project delivery schools and major projects
- Advice & Internal consultancy support

## Information Communication Technology

- Strategy and Architecture
- Operations & Security
- Support
- Infrastructure
- Telephony
- Technical Project Delivery
- Application Development
- Innovation, Research and Development
- Project Pipeline
- Supplier Management
- Service Management
- Future Technology



# Strategy, Workforce and Localities



# Executive Director Strategy, Workforce and Localities (Lead Commissioner)

Partnership and Localities	Strategy and Performance	Governance, Democratic & Legal Services (MO)	Workforce
<ul style="list-style-type: none"> <li>• Local Community Networks</li> <li>• Strategic Partnerships</li> <li>• City, Town and Parish Council Liaison</li> <li>• Local devolution - Community Asset Transfers, Service Devolution</li> <li>• Community, Voluntary Faith, Social Enterprise Strategy and Engagement</li> <li>• Volunteering Services</li> <li>• Engagement</li> <li>• Locality Management, Delivery, partnerships and Projects</li> <li>• One Teams</li> <li>• Community Development</li> <li>• Special Projects</li> <li>• Grants &amp; Lotteries</li> </ul>	<ul style="list-style-type: none"> <li>• Strategy and Policy</li> <li>• Transformation</li> <li>• Performance and Benchmarking</li> <li>• Communications</li> <li>• Programme Management, Project Management</li> <li>• Change and Improvement</li> <li>• Business Intelligence and Analysis</li> <li>• Data Visualisation &amp; Complex Analytics, Data Management/ Warehousing</li> <li>• Digital - Development and Service</li> <li>• Legislation and Horizon Scanning</li> <li>• Statutory Returns</li> <li>• Commissioning Framework and Development</li> <li>• Address Management (LLGP, LGS, Street Naming and Numbering)</li> <li>• Land Charges</li> <li>• GIS</li> <li>• Corporate Equality and Armed Forces Covenant</li> </ul>	<ul style="list-style-type: none"> <li>• Member Services and Casework</li> <li>• Lieutenancy</li> <li>• Democratic Services</li> <li>• Elections Operation</li> <li>• Electoral Registration</li> <li>• Information Governance and Records Management inc. GDPR, FOI, RIPA</li> <li>• Corporate Governance Framework</li> <li>• Annual Governance Statement</li> <li>• Whistleblowing</li> <li>• Officer Code of Conduct</li> <li>• School Admission, Exclusion and Transport Appeal Hearings</li> <li>• Civic &amp; Ceremonial Duties</li> <li>• Legal Services: Child Protection Legal Services, Adults Services Legal Services, Commercial and Contracts Legal Services, Property and Conveyancing Legal Services and Employment Legal Services.</li> </ul>	<ul style="list-style-type: none"> <li>• Workforce Strategy and Planning</li> <li>• Organisational Health and Wellbeing</li> <li>• Operations</li> <li>• Business Partnering</li> <li>• Payroll &amp; Pensions</li> <li>• Organisation Development</li> <li>• Organisational Learning</li> <li>• Health and Safety</li> <li>• Staff Benefits</li> <li>• Policy &amp; Reward</li> <li>• Organisational Equality, Diversity and Inclusion</li> <li>• Change Management</li> </ul>

# Public and Population Health

**Executive Director**

Professor Trudi Grant

**Service Director**

Lou Woolway

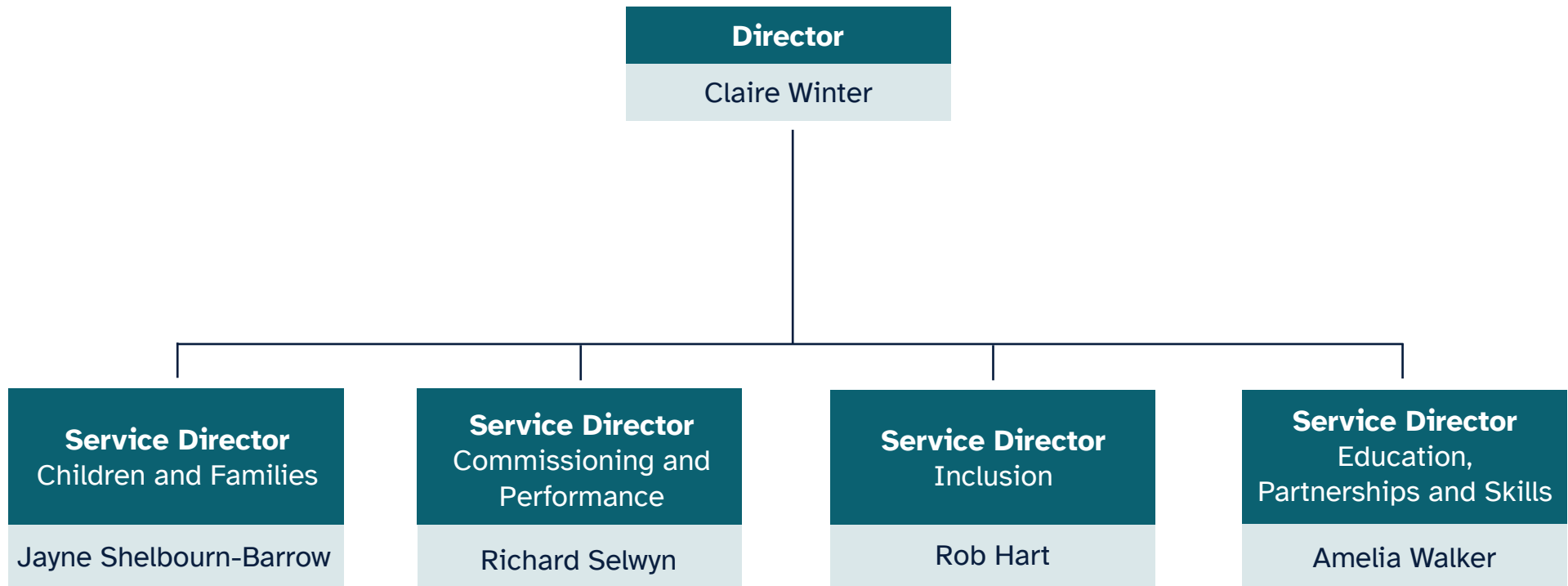


# Executive Director Public and Population Health

## Public and Population Health

- Provision of Specialist Public Health Advice to the System
- Influencing Policy, Practice and Commissioning to Improve Health & Wellbeing
- Inequality, Inclusion and Diversity (Strategy and Engagement)
- Somerset Health and Wellbeing Board (HWBB & ICP)
- Protection of the Public's Health
- Health Improvement
- Tackling Health Inequalities
- Healthcare Public Health
- Specialist Public Health Advice and Support to PCN/LCNs
- Public Health Commissioning
- Public Health Nursing
- Healthy Lifestyle Services
- Provision of Public Health Training/Lecturing
- Centre for Specialist Registrar Training
- Behavioural Insights
- Public Health Research and Evaluation & links with academia
- Health and Care Knowledge, Intelligence & Clinical Audit (Preferably joint for ICS)
- Population Health
- Community Safety Partnership
- Domestic Abuse
- VRU/VAWG
- Health ICB/ Health ICB/LCNs Prevention and Integration

# Children Services



# Executive Director Children Services

## Children and Families

- Early intervention
- Young Carers
- Social Work Services – Assessment, Safeguarding, Children with Disabilities
- Fostering and Kinship
- Regional Adoption Agency Membership
- Corporate Parenting – Children Looked after and Care Leavers, including Residential Homes for Children
- Quality Assurance
- Children’s Safeguarding Partnership Business Unit

## Commissioning and Performance

- Commissioning
- Performance and Transformation
- Business Support
- Community Early Help
- Health and Partners

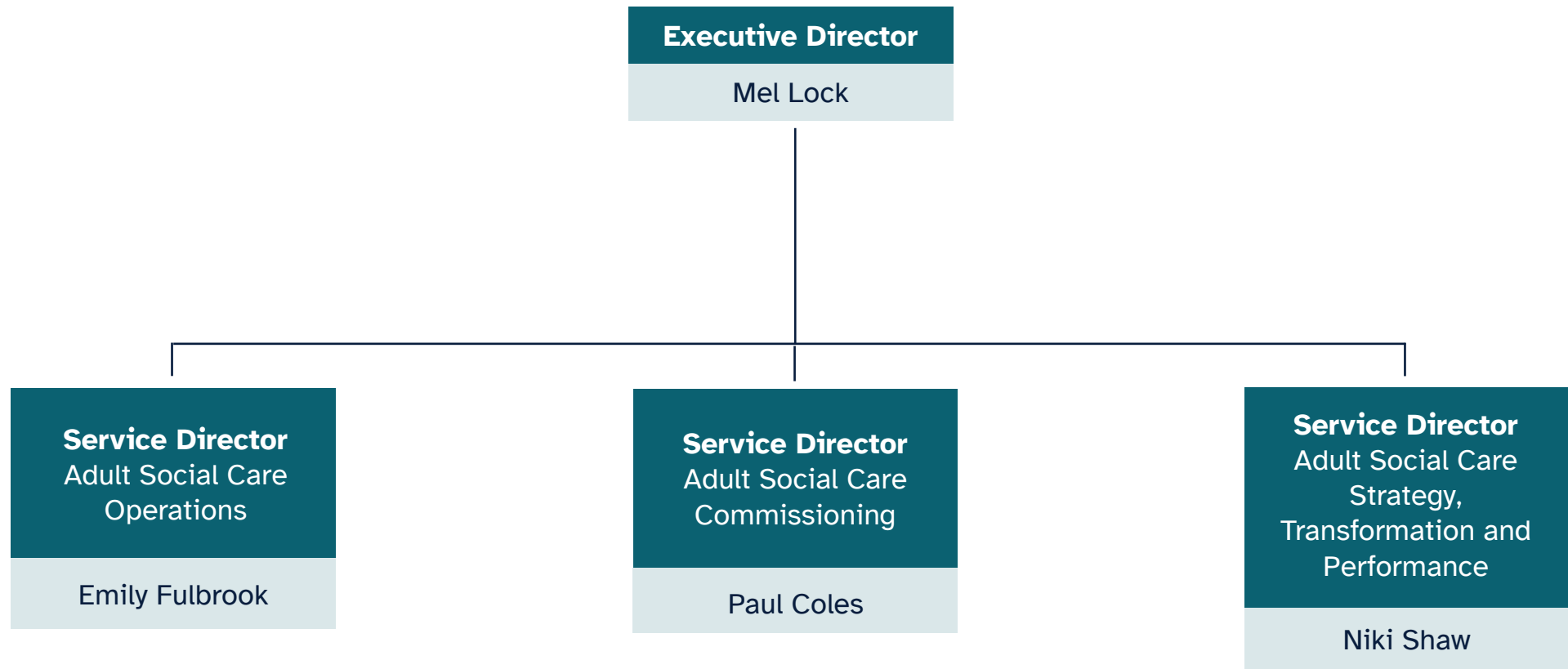
## Inclusion

- Special Educational Needs and Disabilities
- Vulnerable Learners
- Educational Psychology
- Inclusion Transformation and Partnerships

## Education, Partnerships and Skills

- Education Leadership
- Education Operations
- Curriculum and Literacy
- Education Places

# Adult and Health Services



# Executive Director Adult and Health Services

## Service Director Operations

- Acutes
- Safeguarding
- Partnership
- Neighbourhoods/Communities
- Intergration
- Carers
- Care/Alarm Lines and Rapid Responders

## Service Director Commissioning

- Market Development
- Joint Commissioning
- Community and Innovation Linked to Neighbourhoods
- Assurance/inspection
- Brokerage
- Quality & Performance

## Service Director Transformation

- Adults' Transformation Programme
- Delivery of Legislative Change
- Adults' Strategy and Alignment with ICS Strategy
- Service Governance and Forward Planning
- Communications