



**Somerset Urgent
Community Response**

For when you need urgent care at home

NHS

Somerset

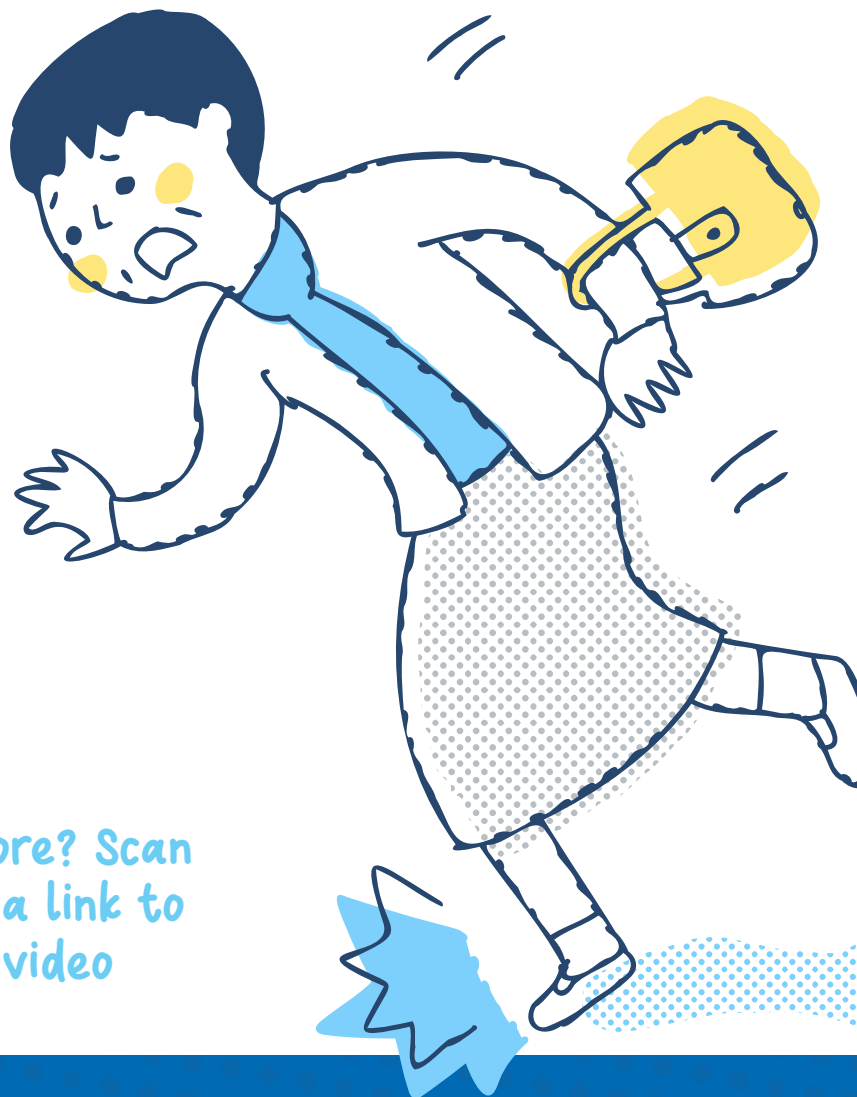
Given a choice when you need urgent care, many people would prefer to be cared for at home

If you, or someone you care for, has a sudden deterioration in your health, your GP, 111 or 999 may refer you into NHS Somerset Urgent Community Response.

Somerset Urgent Community Response provides you with care at home and saves you having to go to hospital by sending our highly qualified health professionals out to you within two hours of us receiving a referral.

We're here for anyone over 18 and are open 365 days a year from 8am – 8pm.

You can ask for Somerset Urgent Community Response when you contact your GP, 111 or 999.



Want to know more? Scan the QR code for a link to our website and video

nhssomerset.nhs.uk/somerset-urgent-community-response