

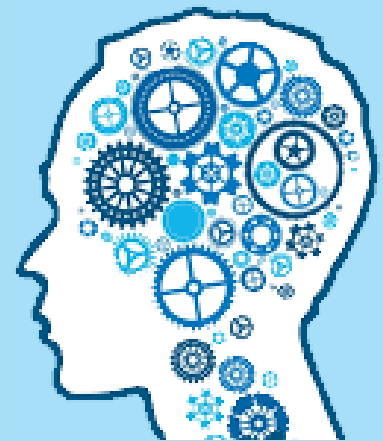
# Social Care Train & Learn Service

Based in Somerset  
for all  
Social Care Providers

Need to be competent  
in a clinical skill?

Are your competencies  
up to date?

We will support you to get that competency  
who ever you are :  
Carer / Staff / Service user



**outstanding care**  
**listening and leading**  
**working together**

Identifying training and learning needs across Somerset, we accept referrals for people receiving any social care. We are supporting and promoting safe effective care by means of skill set sign off in different clinical tasks.

How to Refer:  
Please contact us for a referral form:  
**[socialcaretraining@somersetft.nhs.uk](mailto:socialcaretraining@somersetft.nhs.uk)**

## What we offer:

Social care training is available to the whole of Somerset, provided by Somerset NHS Foundation Trust.

Anyone can refer into the service, requesting support in training needs identified like: Gastrostomy / Stoma Care / Catheter care / Nebulisers / Oxygen / Suction / Wound Care / Capillary Blood Glucose Testing / to name a few.

If you need to be competent in a clinical skill, we will teach you or sign post you to the most relevant support.

## How to contact us:

for requests or queries please E-Mail

[socialcaretraining@somersetft.nhs.uk](mailto:socialcaretraining@somersetft.nhs.uk)

Find us on Social media :

 @CareTrainersSFT

## Who are we:

SCTL are a team of trainers who can provide onsite clinical training to any social care providers across Somerset. We are able to sign off competencies enabling effective delivery of safe care across all services.

## What happens next:

Once you make the referral the SCTL team will make contact to arrange a time that best suits you to visit and deliver the training and signoff the competencies on site. We will follow up with yearly reviews to ensure your competencies are kept up to date and inline with evidence based best practice.